

Install Guide LGB Amfleet Car CamPac Box™ - by Ted Doskaris 6-14-2026

LGB Amfleet factory car with truck mount couplers



Car with CamPac boxes & Kadee coupler



Body mount CamPac Box™ fitted with Kadee centerset coupler



CamPac box coupler alignment with Kadee 980 coupler height gauge



Operation down to 8 foot diameter track curve or greater



Ted Doskaris, 6-12-2026

Overview

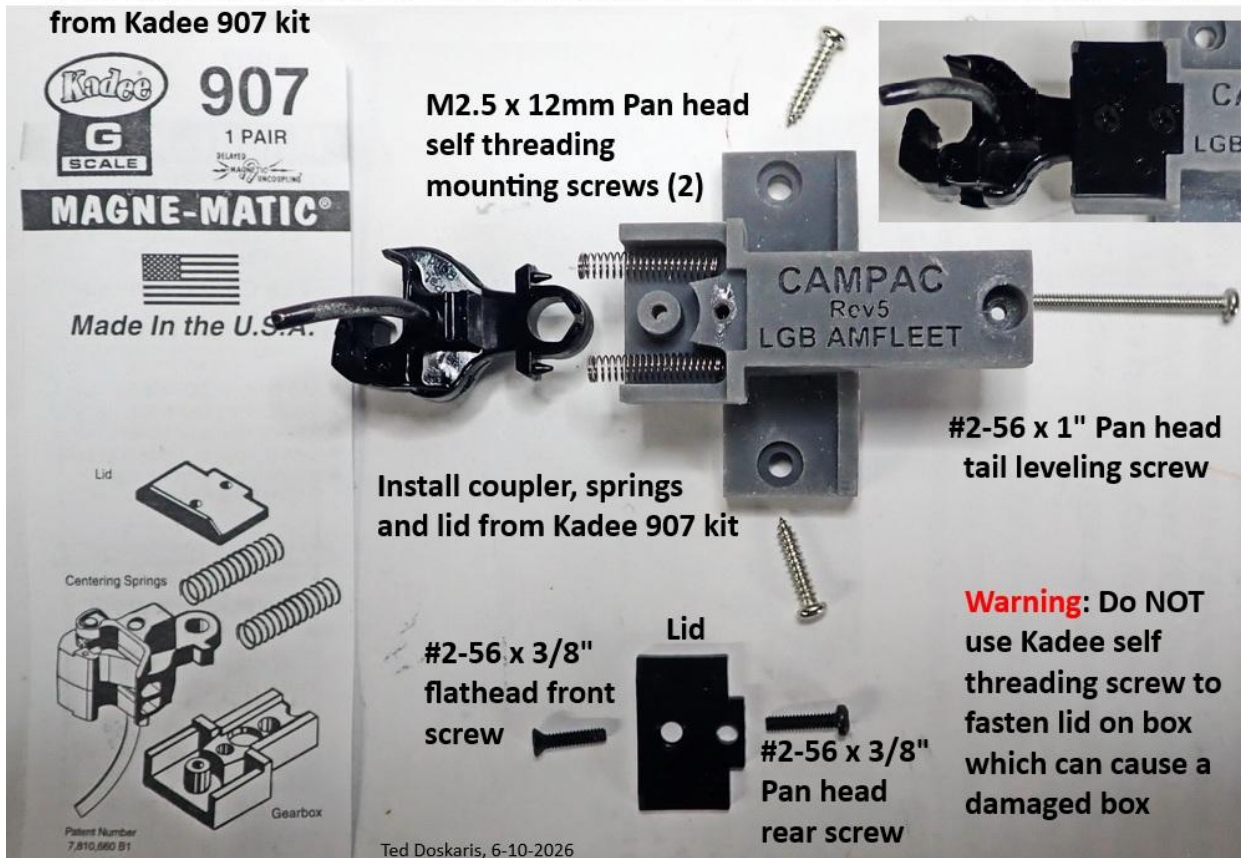
- Instructions are provided as a guide for the installer of 3-D printed CamPac Boxes™ for the LGB brand "G" scale Amfleet cars.
- What is done to the front of the car to body mount the CamPac box is done to the rear. Once done, the car is to operate on 8 foot diameter track curves or greater. ("S" bend track must have a straight track between diverging paths at least length of an Amfleet car.)
- **Note:** Revisions / modifications made to the car are irrevocable, which will affect the resale value to the possible detriment or benefit of the car.
- The installer is to have access to tools and have adequate skills to make cuts and do finish work.
- Tools needed include Phillips type P1 screwdriver, small needle nose pliers, razor saw, sharp pointed scribe or razor knife to mark cut lines, medium & small size files. (Measuring tools include machinist scale and optional caliper.)
- CamPac 3-D printed boxes are the same for front and rear of the car and are supplied with screws.
- **Not included:** **The installer will need to supply a Kadee 907 kit** (1) of which only the springs, lids and couplers will be fitted into each CamPac Box.

Installation Steps:

Step 1 – Coupler Boxes Preparation

Install selected parts from a Kadee 907 Kit in the CamPac Box.

LGB Amfleet passenger car CamPac Box™ fitted with center set coupler, springs and lid from Kadee 907 kit



The visible areas of the CamPac boxes can be optionally painted to match the car.



Step 2 Car Preparation

Car Placement

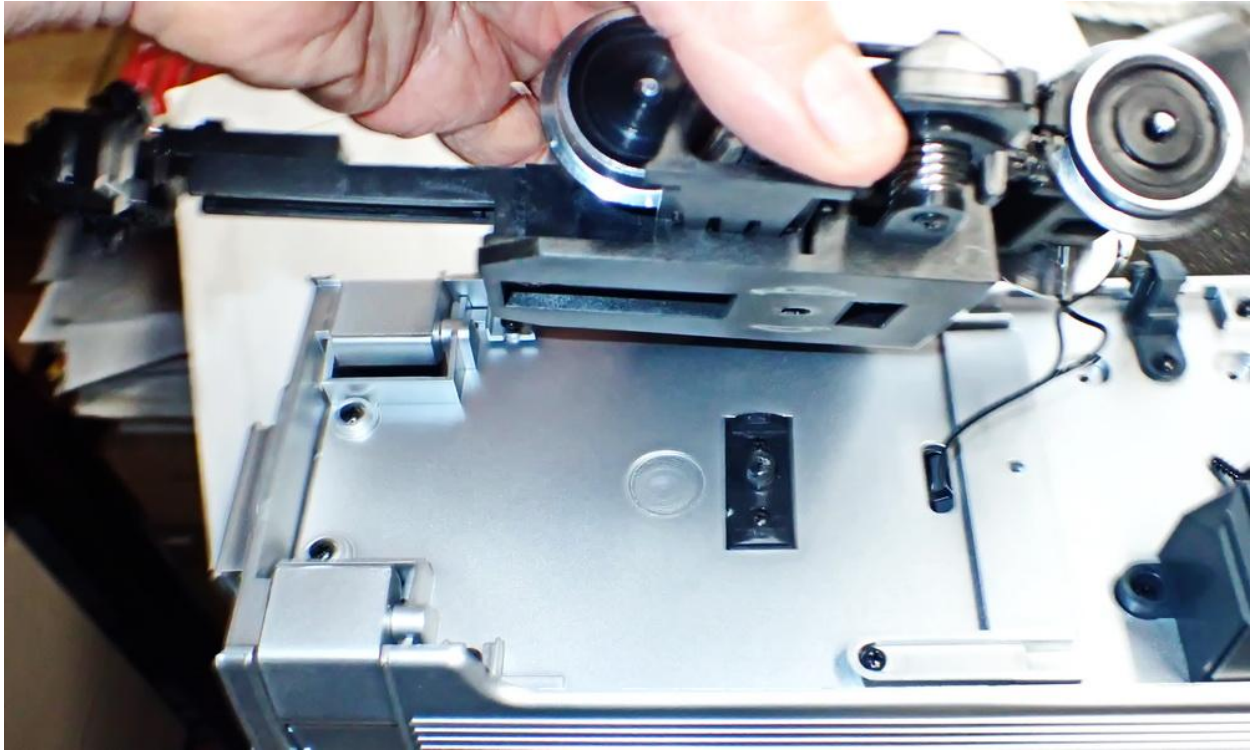
Carefully place the Amfleet car on its back (underbody facing up) on a soft surface. Ensure it's braced so not to fall over. An example purpose made foam cradle is shown by Santa Clarita RR products, link <https://santaclaritarailroad.com>



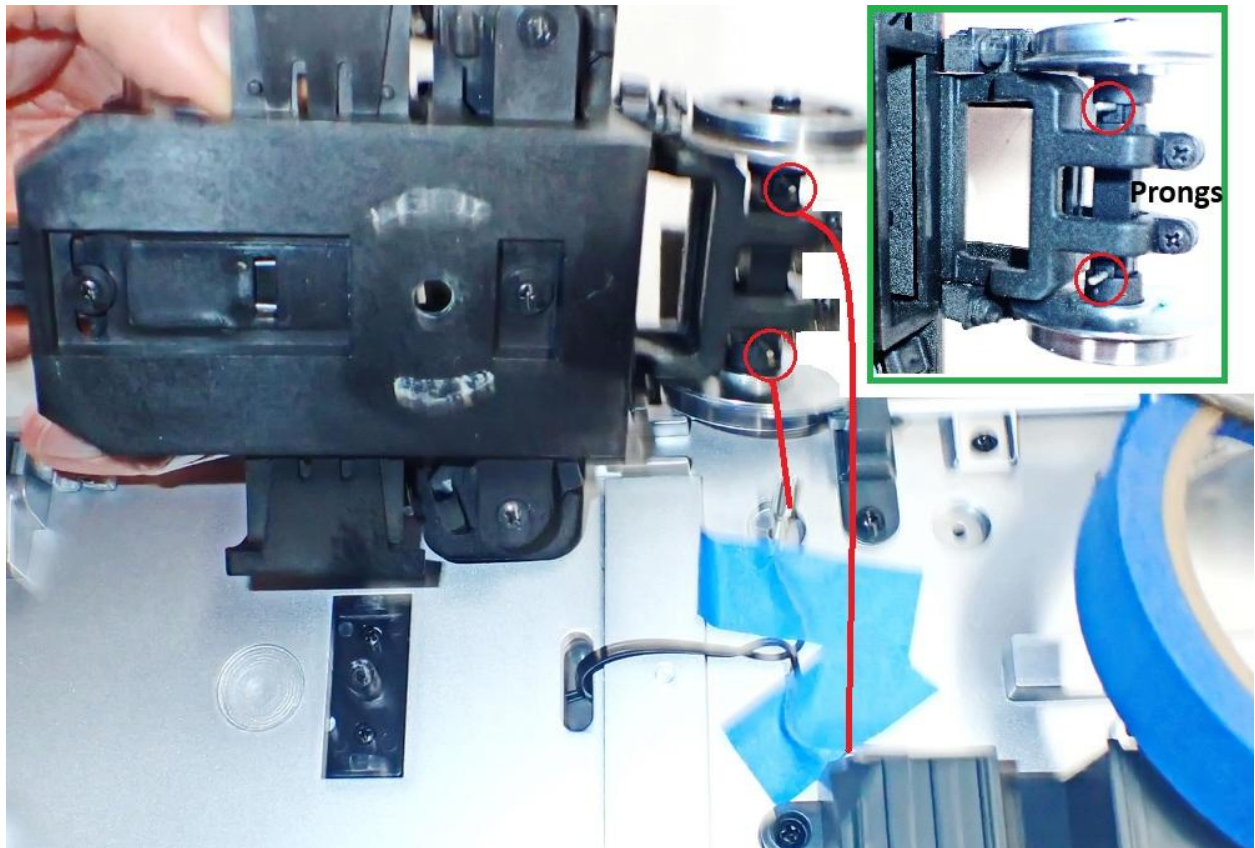
Unfasten the trucks from the chassis to facilitate removal of factory truck mounted coupler tangs and couplers.



Tilt the truck up and un plug the wires from the truck's prongs – noting which way they go.



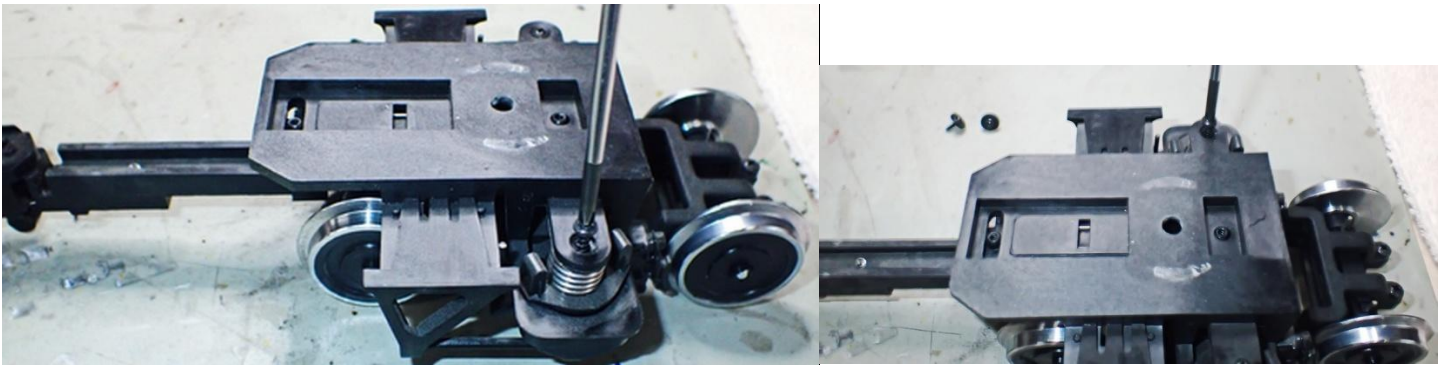
Tape the wires on the chassis in the positions that they had been unplugged



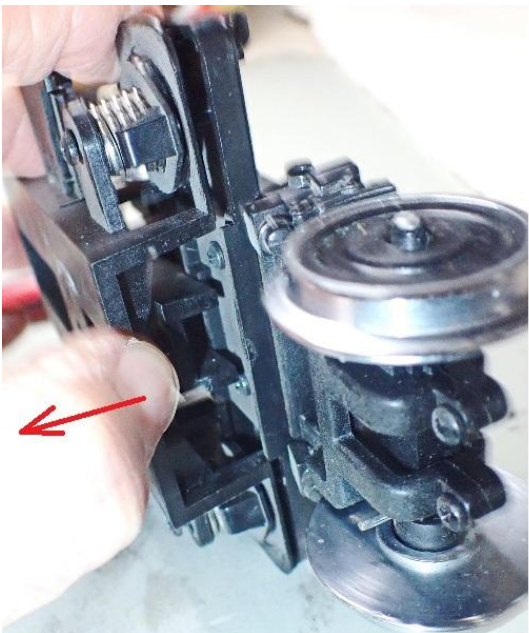
Step 3 Truck Preparation

With the trucks freed up, their coupler tang subassembly is to be removed

First, back out the screws above the large springs



Then remove the two tang screws from the truck body as shown



Partially pry apart the upper body of the truck whilst wiggling the tang up & down until it can be withdrawn



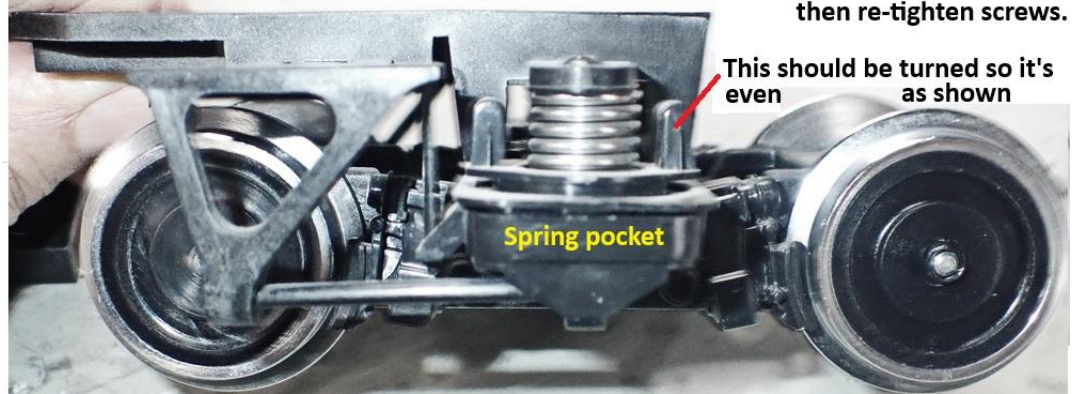
Discard the factory tang & coupler subassembly

Re assemble the trucks without the tangs



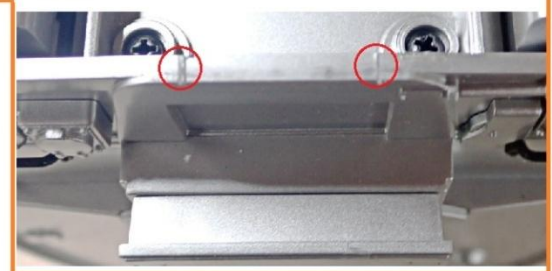
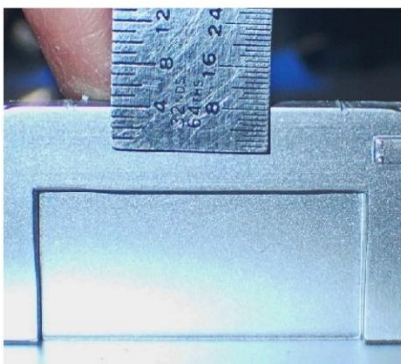
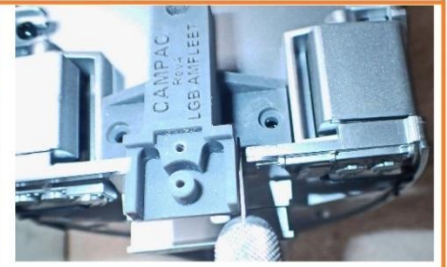
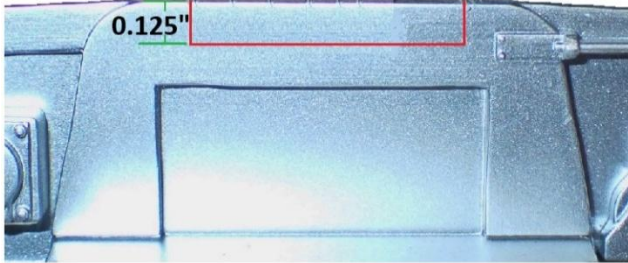
Tighten down on the screws above the large springs. The top of the truck should become level, if not, loosen screws, and check that springs are evenly seated in the pockets, then re-tighten screws.

Set aside the trucks for the time being



Step 4 Cut pocket in car's end bulkheads to accept CamPac boxes

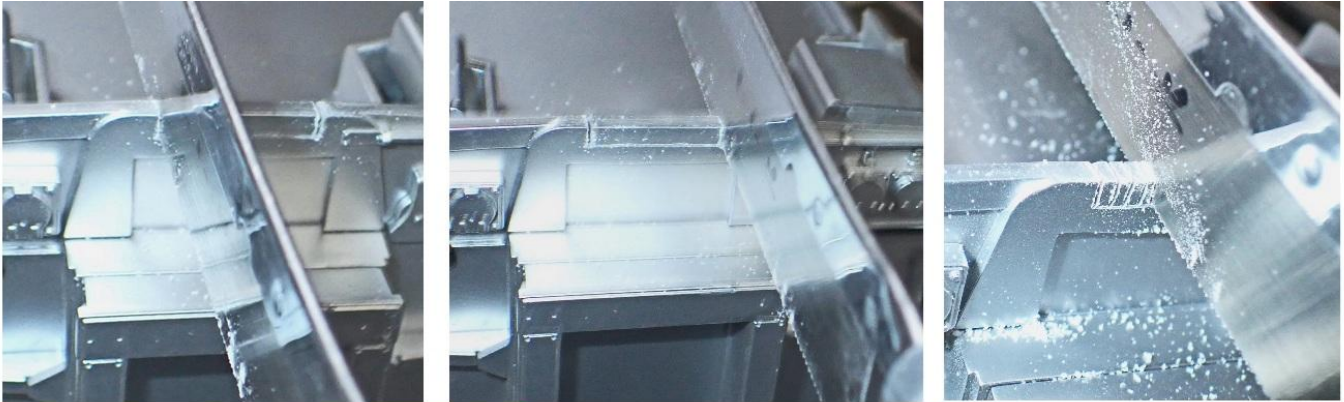
Amfleet car end bulkhead Cutout 0.800" wide Temporarily place CamPac box (assembled or not) over chassis, and knife mark for centering



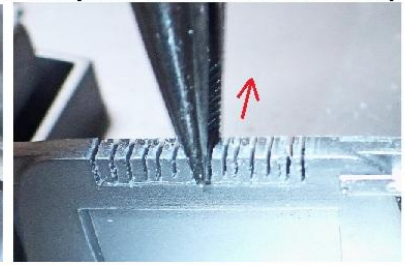
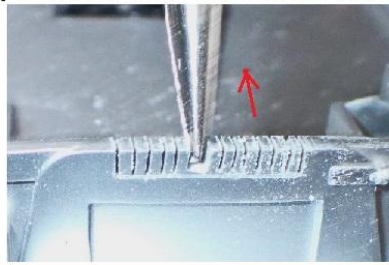
Example caliper used to mark depth of cut line at 0.125"

Ted Doskaris, 6-13-2026

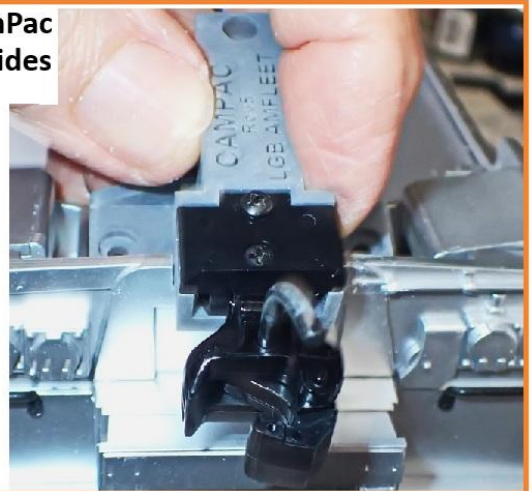
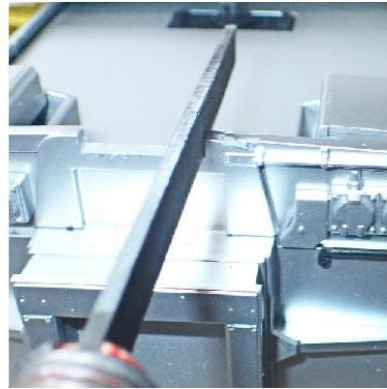
Now cutout the the bulkhead at both ends of the car as illustrated below



Using razor saw, starting from the left & right vertical marks, make successive "teeth" cuts to the marked horizontal line
Then break out the teeth with small needle nose pliers
(To avoid tear-out at the front, tilt plier inboard as shown)



File finish to marked line and "square up" corners. The CamPac box portion should fit, if too tight, evenly file the cutout's sides



Ted Doskaris, 6-13-2026

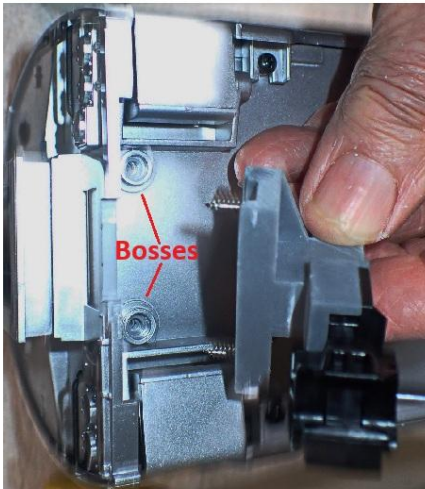
Step 5 Mount the CamPac Box Assembly on each end of the car



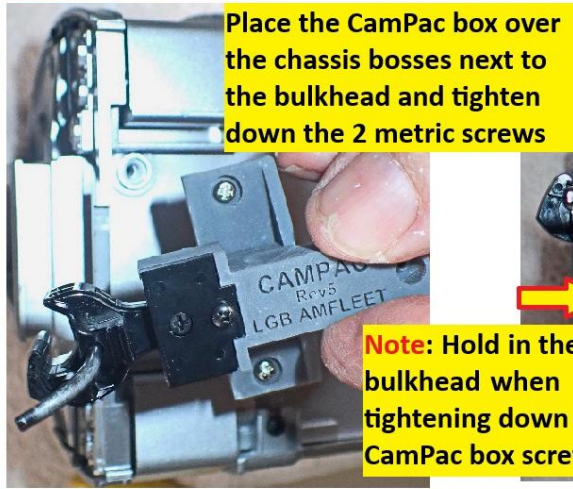
Remove the 2 factory screw that fasten the end bulkhead to the chassis



The CamPac box is to be mounted with 2 M2.5 x 12mm screws

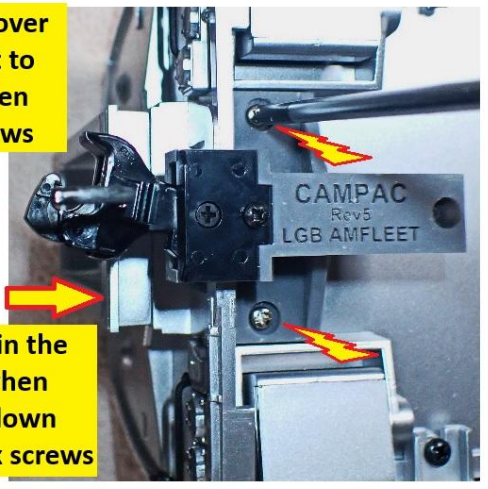


Bosses

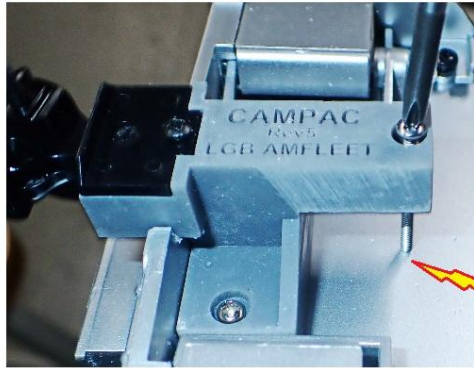


Place the CamPac box over the chassis bosses next to the bulkhead and tighten down the 2 metric screws

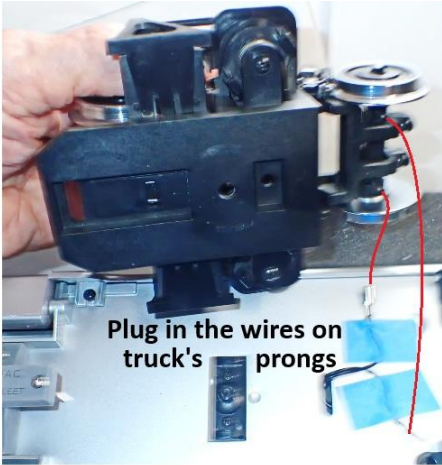
Note: Hold in the bulkhead when tightening down CamPac box screws



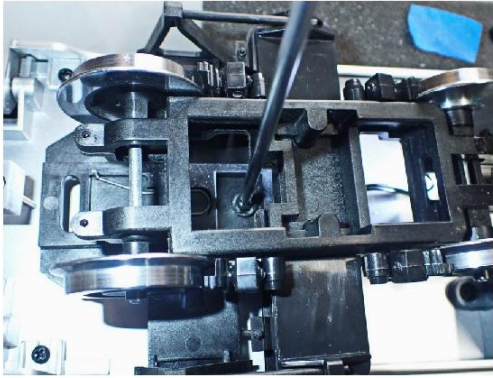
Thread in the #2-56 x 1 inch tail screw until it just touched the chassis



Step 6 Remount Trucks



With wires connected to both trucks and trucks mounted, place car on track and apply power to verify lights are on. (Lights are typically dim in the daylight)



Slide switch for lights
1 = On, 0 = Off
Set switch to 1 to test the car's lights



Ted Doskaris, 6-14-2026

If lights don't illuminate, there could be a short circuit if wires were connected wrong on the truck/s prongs

Step 7 Adjust car's couplers to align with Kadee 980 coupler height gauge



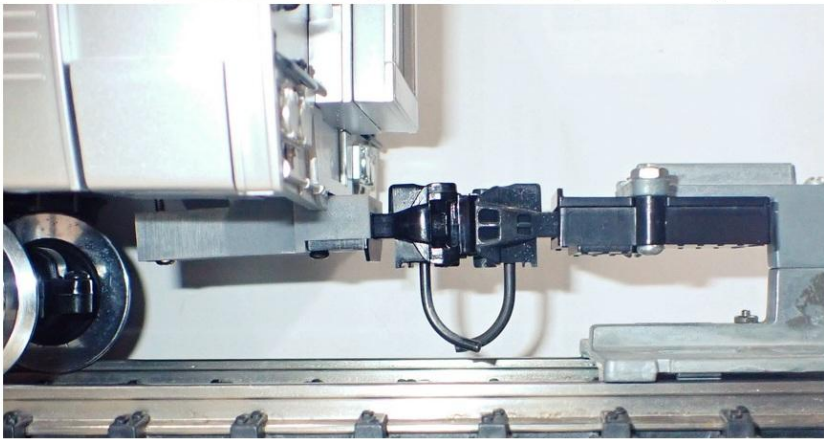
Place Amfleet car on straight track on a table with one end over hanging



Adjust CamPac box tail leveling screw for coupler alignment with the Kadee 980 coupler height gauge

It may take a few adjustment attempts, going back and forth, checking the Kadee gauge

Turn the car around and repeat the process for the other coupler



Ted Doskaris, 6-14-2026

DONE!