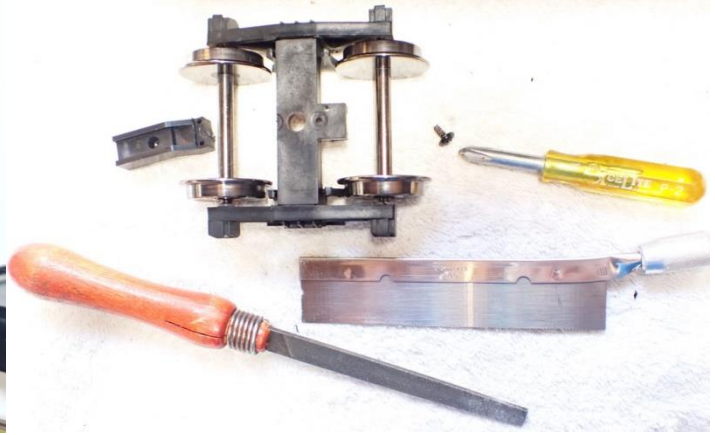


Aristo 50 Ton 2 Bay Hopper CamPac Box™ Quick Install Guide

Ted Doskaris, 7/17/2023



Trucks to be removed & have factory coupler tang cut off for rotational clearance with intended car operation on 8 foot diameter or greater curves. Example done with razor saw, then file finished.



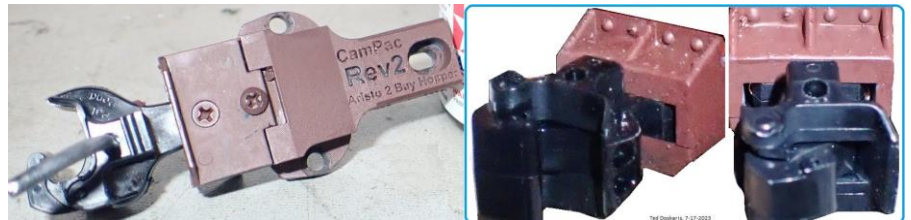
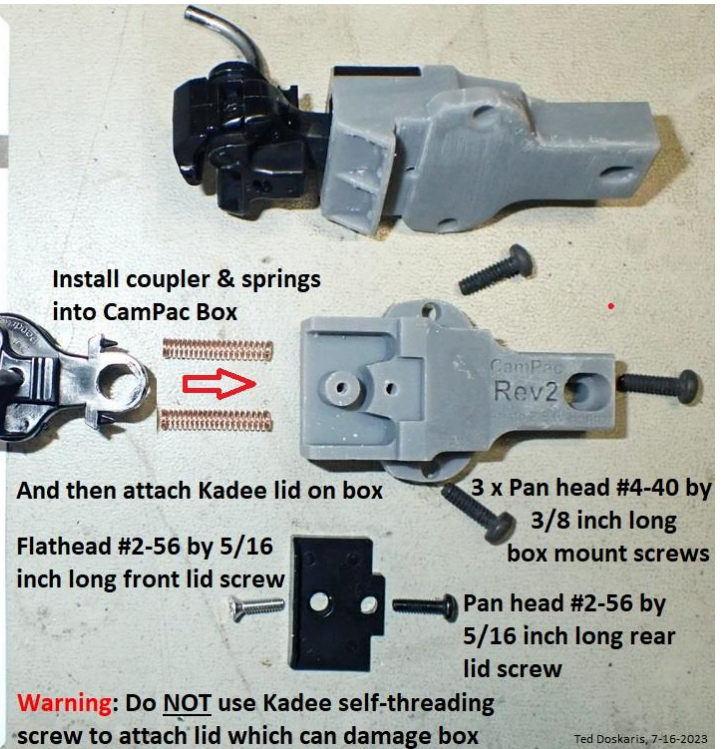
CamPac Box™ Preparation

Installer is to obtain Kadee* 907 kit and install parts as illustrated.

Phillips head machine screws included in CamPac kit are used to attach Kadee lid and to body mount boxes on chassis pad.

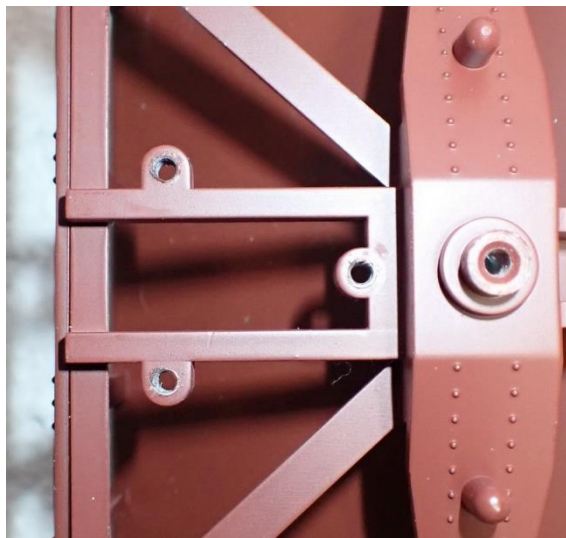


Assembled box shown painted



*Kadee is a registered trademark of Kadee Quality Products Co., White City, Oregon, USA.

Mounting Boxes

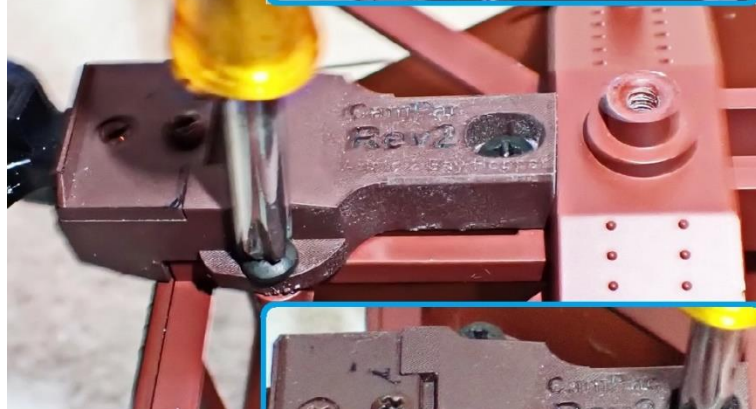


The Aristo 2 bay hopper car includes a 3 hole chassis pad with holes sized for #4 screws intended to accept the relatively large Kadee 830 or 906 body mount coupler boxes. The smaller CamPac Box™ having a more prototypical draft gear fairing is to be mounted on the same pad. A #4-40 tap can be used to pre-thread the holes. Alternatively, #4-40 screws provided to mount the CamPac Box can be progressively threaded in by turning them back & forth until the box is seated on the pad, and then tightened with moderate torque.

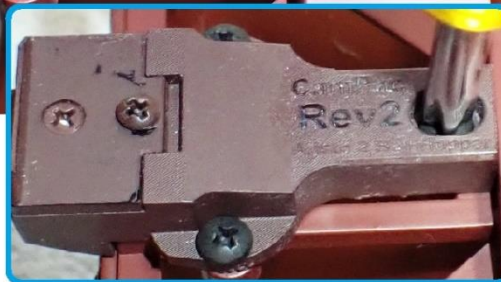
First, tighten screws at box ears



With coupler tangs having been removed, re-mount trucks using factory washer & screw.



Lastly, tighten screw at tail



Shown Kadee 980 gauge coupler alignment without shims. Should coupler need to be leveled upward, typically a thin washer or shim/s from the Kadee 907 kit could be inserted under the box tail at or near screw

DONE!

